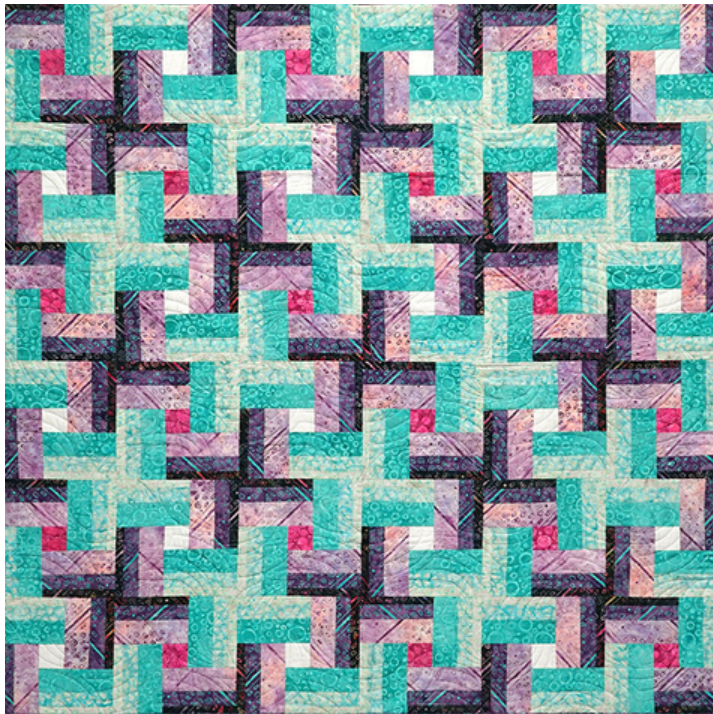




Twisted Quilt Along - Ebony Love



JOIN THE PARTY!

Twisted is a woven log cabin quilt made from two alternating offset log cabin blocks using a partial-seam construction technique. Offered in four sizes from Baby to Queen.

Ebony will teach you how to piece the foundational blocks for this quilt, demonstrate her strip-piecing tips, show you the magic of partial seam construction, and invite you into a Private Room where you can chat and share progress with other quilt along participants.

We'll be working on the 60" x 60" Throw version of the quilt.

SUPPLIES

Twisted quilt pattern

- (2) 1/2 yard light fabrics
- (2) 3/4 yard medium fabrics
- (2) 1 yard dark fabrics
- (2) 1/4 yard assorted fabrics for block centers
- 1/2 yd binding
- 3-7/8 yds backing fabric
- 68 x 68" piece of batting

OTHER HELPFUL SUPPLIES

- 75/11 quilting needle or 80/12 topstitch needle
- 50wt neutral piecing thread
- Basic sewing supplies

☎ 877-577-8458

✉ cust-service@lovebugstudios.com

🏠 1862 E. Belvidere Rd. PMB 388, Grayslake, IL 60030

